



V3.5-11-2014

FACING MACHINES

FACING MACHINES



MADE IN FRANCE

GLOBAL PROCESS

www.axxair.com

ø3 - ø25,4 mm
ø0,1 to ø1 "



www.axxair.com

V3.5-11-2014

Technical Specifications

Burr-free tube squaring machine

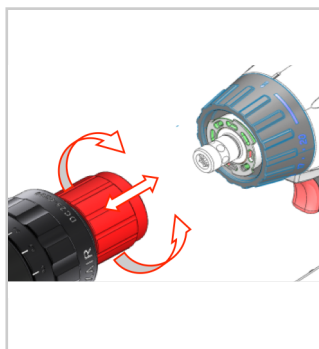
- Accurate manual advance (0.1 mm steps) -
- Light and compact: 2.8 kg with battery

Drill / Driver:

- QuiXS quick change system
- 18V motor
- Lithium-Ion technology
- LED battery charge indicator
- Supplied with two 1.5 Ah 18V batteries, rapid battery charger



Jaw opens wide for easy positioning of tube.



QuiXS: Lets you change the head or fit a chuck in just a few seconds.



Optionally, we can supply a package with a DC65 head

References	Accessories	Consumables
DC25-P2 (220 V) DC25-P1 (110 V)	DCM25-XX: XX mm diameter jaws for DC25	<p>DC-OUT1: Box of 10 blades, TIALN HSS-E</p> <p>DC-UOUT1: Blade, TIALN HSS-E (single unit)</p> <p>DC-OUT2: Blade tightening screw</p>



ø3 - ø63,5 mm
ø0,1 to ø2,5 "



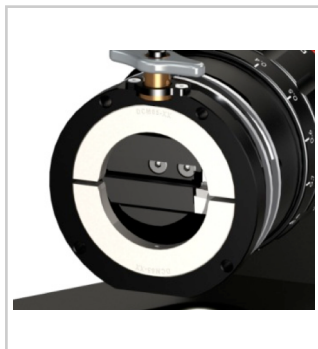
Technical Specifications

Burr-free tube squaring and bevelling machine

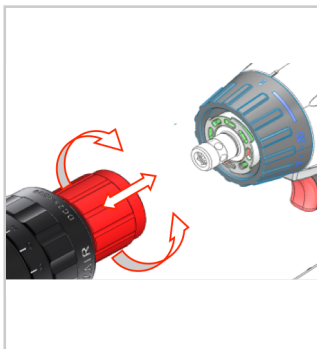
- Accurate manual advance (0.1 mm steps)
- Quick blade adjustment, no disassembly required
- Light and compact: 7.1 kg with battery
- Removable support foot
- 30° and 45° outside bevel possible with optional tool holder.
- squaring and bevelling in one operation*

Drill / Driver

- QuiXS quick change system
- 18V motor
- Lithium-Ion technology
- LED battery charge indicator
- Supplied with two 3Ah 18V batteries, rapid battery charger



Jaw opens wide for easy positioning of tube.



QuiXS: Lets you change the head or fit a chuck in just a few seconds.



Tool adjusted to the diameter of tube to be machined in just a few seconds.

References	Accessories	Consumables
DC65-G2 (220 V) DC65-G1 (110 V)	<p>DCM65A-XX: Jaws for diameters between 1 and 2,5 inches for the DC65.</p> <p>DCM65B-XX: Jaws for diameters between 0,1 and 1 inch. for the DC65.</p> <p>DCM6525: Spacer for fitting DC25 jaws on a DC65.</p> <p>DC65-P300: 30° bevel tool holder DC65-P450: 45° bevel tool holder</p>	<p>DC-OUT1: Box of 10 blades, TIALN HSS-E</p> <p>DC-UOUT1: Blade, TIALN HSS-E (single unit)</p> <p>DC-OUT2: Blade tightening screw</p>

*Bevelling possible over the whole of the machine's range (0,1 to 2,5 inches), if squaring and bevelling, range between 20 and 53 mm diameter, max. height of bevel 0,1 inch.



ø3 - ø63,5 mm
ø0,1 to ø2,5 "



Technical Specifications

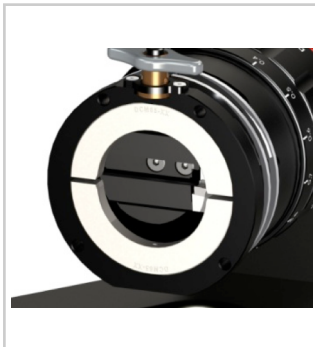
DC25 and DC65 package

AXXAIR offers a set which combines the best in squaring in a single box.

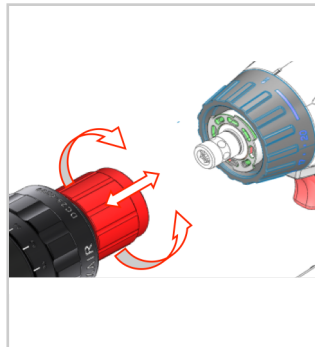
- 3.0Ah 18V drill driver with all accessories.
- DC25 squaring head
- DC65 squaring head

With the **QuiXS** system, you can change from one set-up to another in just a few seconds. DC25: true up tubes with a light, ultra-compact machine.

DC65: **squaring and bevelling** (optional bevelling tool holder) on the bench or directly on the tubes (dismountable foot).



Jaw opens wide for easy positioning of tube.



QuiXS: Lets you change the head or fit a chuck in just a few seconds.



Tool adjusted to the diameter of tube to be machined in just a few seconds.

References	Accessories	Consumables
DCPACK-G2 (220 V) DCPACK-G1 (110 V)	<p>DCM25-XX: XX mm diameter jaws for DC25</p> <p>DCM65A-XX: Jaws for diameters between 1 and 2,5 inches for the DC65.</p> <p>DCM65B-XX: Jaws for diameters between 0,1 and 1 inch. for the DC65.</p> <p>DCM6525: Spacer for fitting DC25 jaws on a DC65.</p> <p>DC65-P300: 30° bevel tool holder DC65-P450: 45° bevel tool holder</p>	<p>DC-OUT1: Box of 10 blades, TIALN HSS-E</p> <p>DC-UOUT1: Blade, TIALN HSS-E (single unit)</p> <p>DC-OUT2: Blade tightening screw</p>

*Bevelling possible over the whole of the machine's range (0,1 to 2,5 inches), if squaring and bevelling, range between 20 and 53 mm diameter, max. height of bevel 0,1 inch.



ø3 - ø25,4 mm
ø0,1 to ø1 "



V3.5-11-2014



Technical Specifications

Burr-free tube squaring machine

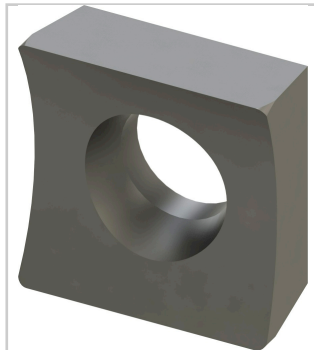
- Accurate manual advance (0.1 mm steps) -
- Light and compact: 4 kg

Mains motor

- Motor 1100W.
- Two speed reducer with thumbwheel speed change.
- Top quality speed changer.
- Anti-start protection.
- Reduction housing in cast aluminium



Jaw opens wide for easy positioning of tube.



HSS TIALN HIGH QUALITY Reversible blade (two cutting edges)



Optionally, we can supply a package with a DC65 head

References	Accessories	Consumables
DC25-M1 (110 V) DC25-M2 (220 V)	DCM25-XX: XX mm diameter jaws for DC25	DC-OUT1: Box of 10 blades, TIALN HSS-E DC-UOUT1: Blade, TIALN HSS-E (single unit) DC-OUT2: Blade tightening screw



ø3 - ø63,5 mm
ø0,1 to ø2,5 "



Technical Specifications

Burr-free tube squaring and bevelling machine

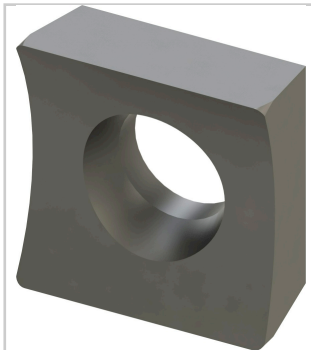
- Accurate manual advance (0.1 mm steps)
- Quick blade adjustment, no disassembly required
- Light and compact: 7.1 kg with battery
- Removable support foot
- 30° and 45° outside bevel possible with optional tool holder.
- squaring and bevelling in one operation*
- Reduction housing in cast aluminium

Mains motor

- Motor 1100W.
- Two speed reducer with thumbwheel speed change.
- Top quality speed changer.
- Anti-start protection.



Jaws open wide for easy positioning of tube.



HSS TIALN HIGH QUALITY Reversible blade (two cutting edges)



Tool adjusted to the diameter of tube to be machined in just a few seconds.

References	Accessories	Consumables
DC65-M1 (110 V) DC65-M2 (220V)	<p>DCM65A-XX: Jaws for diameters between 1 and 2,5 inches for the DC65.</p> <p>DCM65B-XX: Jaws for diameters between 0,1 and 1 inch. for the DC65.</p> <p>DCM6525: Spacer for fitting DC25 jaws on a DC65.</p> <p>DC65-P300: 30° bevel tool holder DC65-P450: 45° bevel tool holder</p>	<p>DC-OUT1: Box of 10 blades, TIALN HSS-E</p> <p>DC-UOUT1: Blade, TIALN HSS-E (single unit)</p> <p>DC-OUT2: Blade tightening screw</p>

*Bevelling possible over the whole of the machine's range (0,1 to 2,5 inches), if squaring and bevelling, range between 20 and 53 mm diameter, max. height of bevel 0,1 inch.



ø3 - ø63,5 mm
ø0,1 to ø2,5 "



Technical Specifications

DC25 and DC65 package

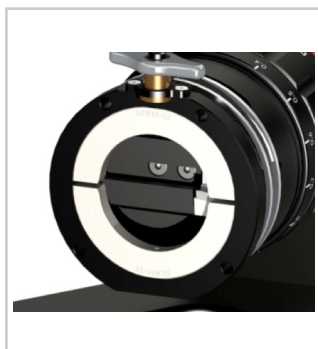
AXXAIR offers a set which combines the best in squaring in a single box.

- A mains motor 1100W
- DC25 squaring head
- DC65 squaring head

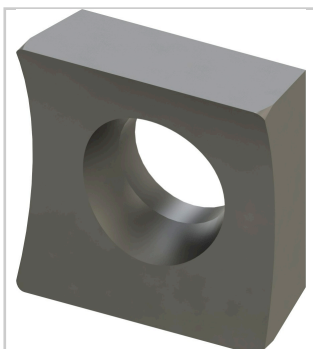
You can change from one set-up to another in just a few seconds.

DC25: true up tubes with a light, ultra-compact machine.

DC65: **squaring and bevelling** (optional bevelling tool holder) on the bench or directly on the tubes (dismountable foot).



Jaws open wide for easy positioning of tube.



HSS TIALN HIGH QUALITY Reversible blade (two cutting edges)



Tool adjusted to the diameter of tube to be machined in just a few seconds.

References	Accessories	Consumables
<p>DCPACK-M1 : Pack DC25 + DC65 (110 V)</p> <p>DCPACK-M2 : Pack DC25 + DC65 (220 V)</p>	<p>DCM25-XX: XX mm diameter jaws for DC25</p> <p>DCM65A-XX: Jaws for diameters between 1 and 2,5 inches for the DC65.</p> <p>DCM65B-XX: Jaws for diameters between 0,1 and 1 inch. for the DC65.</p> <p>DCM6525: Spacer for fitting DC25 jaws on a DC65.</p> <p>DC65-P300: 30° bevel tool holder</p> <p>DC65-P450: 45° bevel tool holder</p>	<p>DC-OUT1: Box of 10 blades, TIALN HSS-E</p> <p>DC-UOUT1: Blade, TIALN HSS-E (single unit)</p> <p>DC-OUT2: Blade tightening screw</p>

*Bevelling possible over the whole of the machine's range (0,1 to 2,5 inches), if squaring and bevelling, range between 20 and 53 mm diameter, max. height of bevel 0,1 inch.



Consumables

DC-OUT1: Box of 10 blades, TIALN HSS-E

DC-UOUT1: Blade, TIALN HSS-E (single unit)

DC-OUT2: Blade tightening screw



Accessories

DCM25-XX: Jaws for DC25 machine. Tube diameter = XX.XX mm (3 to 1 inch).

DCM65A-XX: Jaws for DC65 machine. Tube diameter between 1 and 2,5 inches.

DCM65B-XX: Jaws for DC65 machine. Tube diameter between 0,1 and 1 inch.

Stainless steel jaws, so as not to pollute the tube. A set of jaws is necessary for each outside diameter of tube to be machined.

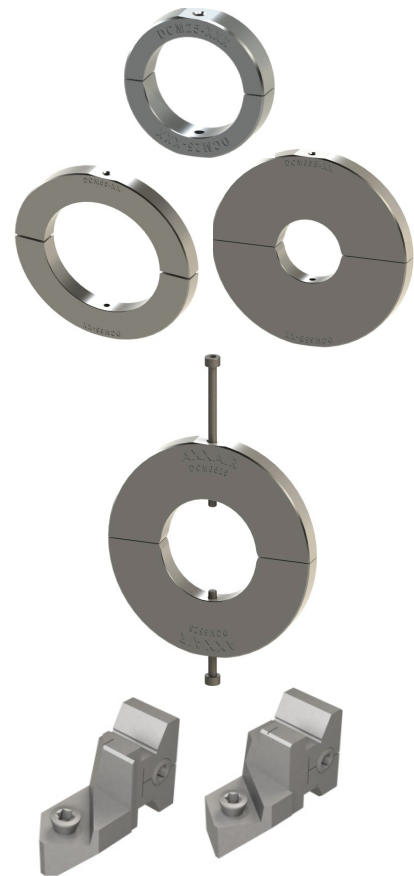
DCM6525: Spacer for fitting DC25 jaws on a DC65



DC65-P450: Tool holder for bevelling the outer edge at 45° *

DC65-P300: Tool holder for bevelling the outer edge at 30° *

Tool holders are supplied without blades



*Bevelling possible over the whole of the machine's range (0,1 to 2,5 inches), if squaring and bevelling, range between 20 and 53 mm diameter, max. height of bevel 0,1 inch.

